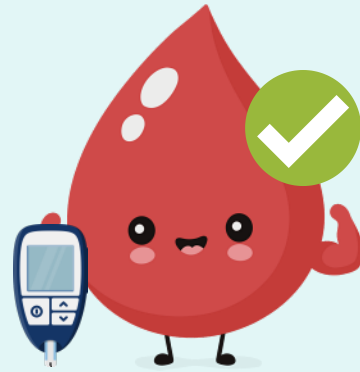


"Diabetes doesn't stand a chance against me!"



Start managing your diabetes with us now.

Join the PTEC Programme!

NHG Polyclinics	6355 3000
National University Polyclinics	6908 2222
SingHealth Polyclinics	6643 6969

Brought to you by:



Supported by:



All information is correct as of Mar 2026.

PTEC-DM_Ver 2.2_English

Primary Tech-Enhanced Care (PTEC)

Managing diabetes? Let's make it easier!

Sign up for our Home Diabetes Monitoring Programme today!



CONVENIENT

Test your blood sugar levels at home and share readings automatically with your care team via a phone app.



IMPROVE DIABETES CONTROL

Track and manage your own condition better. The app's chatbot will also guide you to recognise symptoms of high/low blood sugar, and encourage lifestyle changes.



ENJOY GREATER SUPPORT

The app offers timely, interactive advice, along with helpful reminders and notifications. Your care team will monitor your blood sugar levels and advise you in between visits.

For a limited period only, this programme comes with a complimentary blood glucose meter.

Ask your care team about PTEC. Scan the QR code for more information or visit

<https://for.sg/monitormyglucose>



YOUR CARE JOURNEY

1

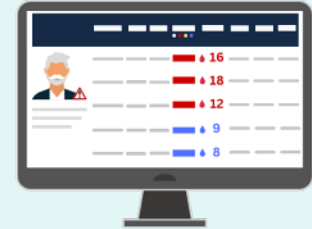
TELE-MONITORING



Health
Discovery+



POLYCLINIC



Install and subscribe to the Health
Discovery+ app on your phone.

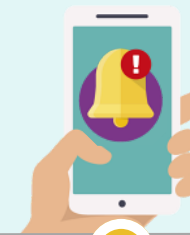
Take your blood sugar
reading at the
instructed timepoints.

Your reading will be sent
to your care team through
the Health Discovery+ app.

Abnormal readings
will be flagged to the
care team.

2

TELE-SUPPORT



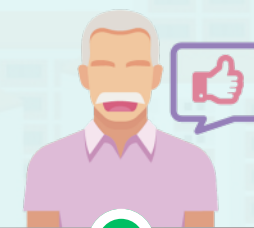
If required, your care team will give you further
guidance via tele-consultations.

The app will advise what you should do if
your reading is not within the desired range.

You will receive a reminder if you
miss taking your blood sugar reading.

3

TELE-TREATMENT



Please follow the medication and
lifestyle advice given by your care team
during the clinic/phone consultation.

You will also receive encouragement
and tips to improve your blood sugar
levels.

Now you can manage your blood
sugar levels more effectively!

*Please note that your usual consultation, medication and lab tests will be charged separately from the PTEC Programme.
Other terms and conditions apply. Please speak to your care team for more details.*